

# Trauma and Injury Intelligence Group Biannual Bulletin

Royal Lancaster Infirmary Emergency Department  
April 2014 to March 2015

July 2015



Centre for Public Health,  
Faculty of Education, Health and Community,  
Liverpool John Moores University,  
Henry Cotton Campus,  
15-21 Webster Street,  
Liverpool, L3 2ET

[cph.org.uk](http://cph.org.uk)

0151 231 4500

[tiig@ljmu.ac.uk](mailto:tiig@ljmu.ac.uk)

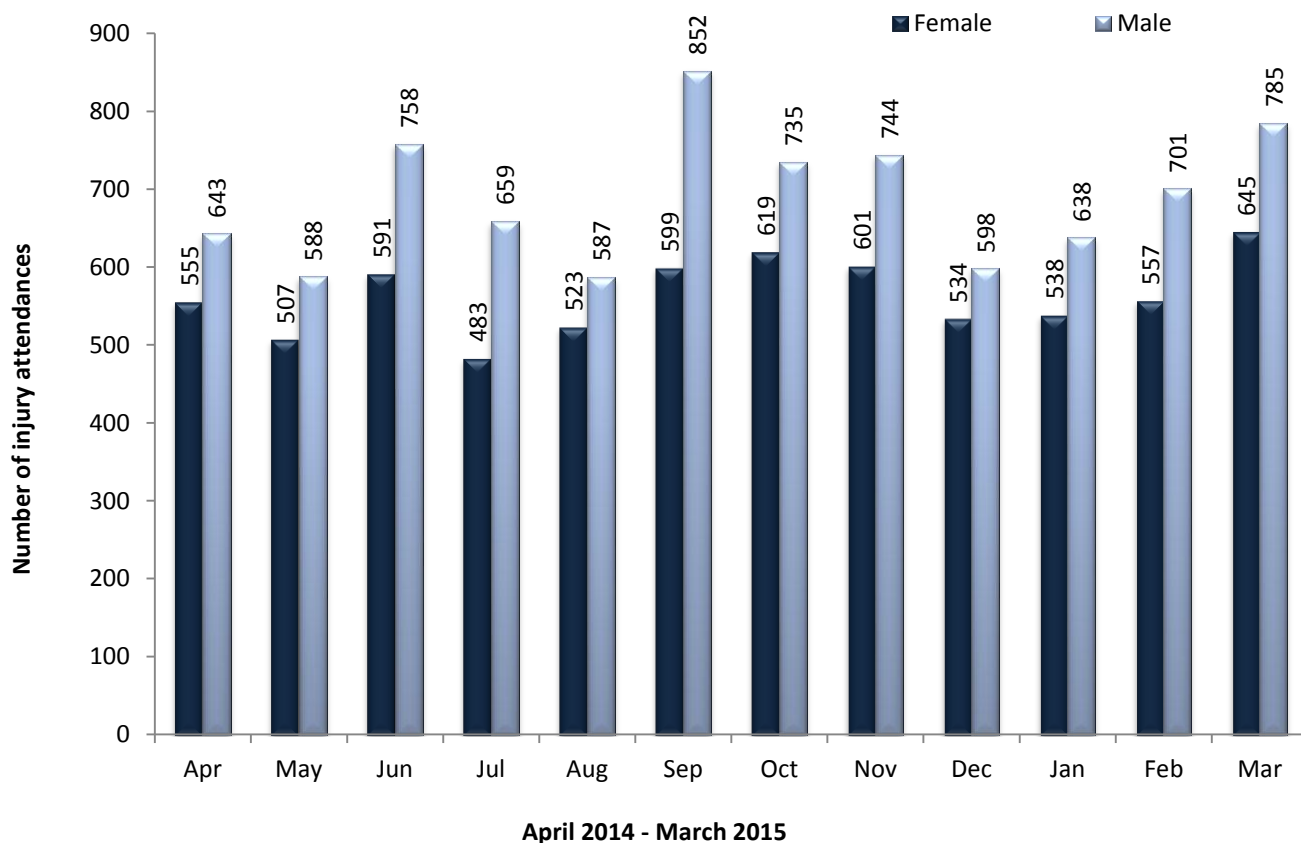
[tiig.info](http://tiig.info)

[twitter.com/tiig\\_cph](https://twitter.com/tiig_cph)

## ALL INJURY ATTENDANCES

This bulletin provides a breakdown of all injury attendances to Royal Lancaster Infirmary Emergency Department (ED) between April 2014 and March 2015. In the twelve month period there were 15,041 injury attendances to the ED. The month with the highest number of attendances, calculated as a daily average, was September 2014 (48 per day) while May 2014 had the fewest (35 per day; figure 1).

**Figure 1: ED attendances by gender and month, April 2014 to March 2015<sup>^</sup>**



<sup>^</sup>There were <5 records where the gender was unknown; these have been omitted from the chart.

There were more male (55%) than female attendances to the ED in 2014/15 (n=8,288; figure 1). There were equal proportions (29% of each) of attendees aged between 15 and 29 years (n=4,331) and between 30 and 59 years (n=4,372; figure 2).

**Figure 2: ED attendances by age group and month, April 2014 to March 2015**

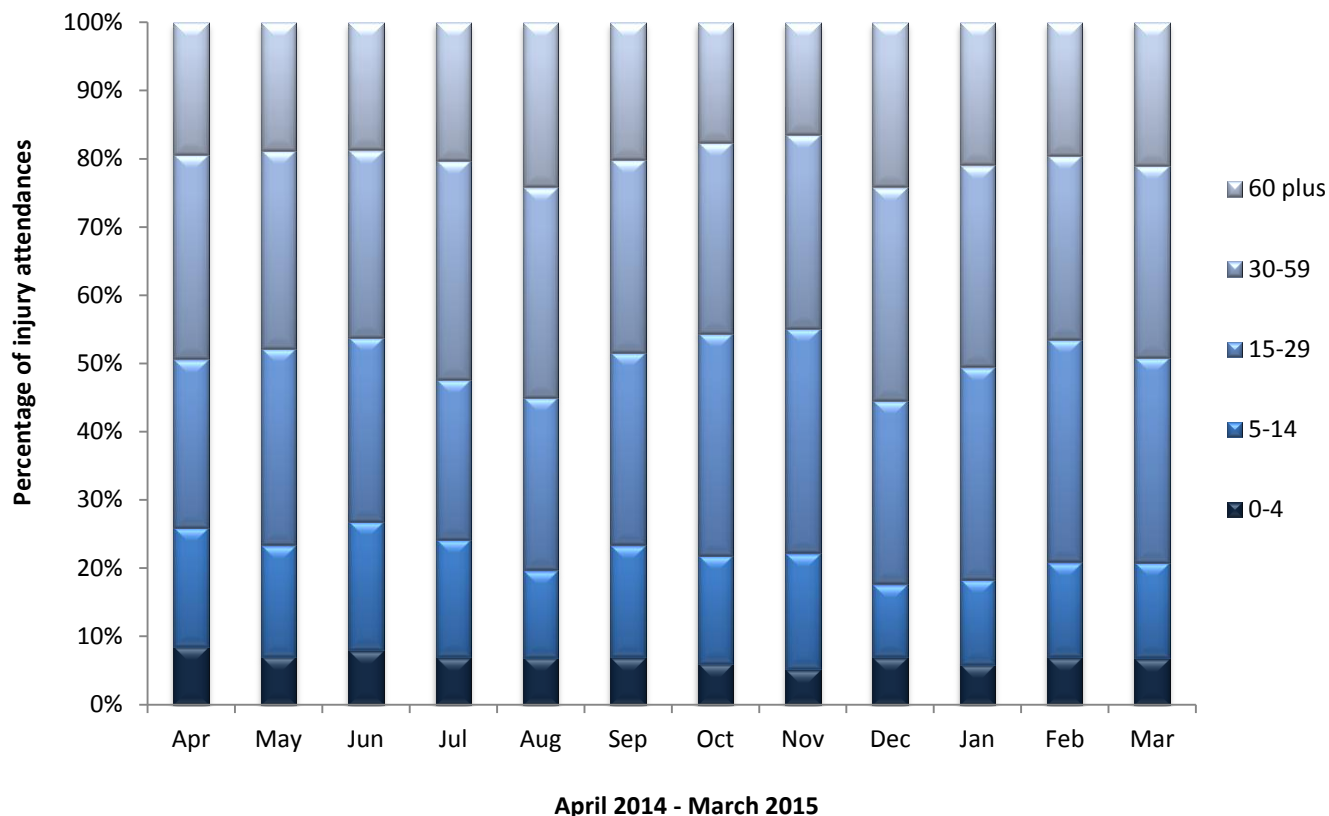


Table 1 shows the injury group of attendances between April 2014 and March 2015. Three-quarters (75%) of attendances were categorised as ‘other’ injuries (n=11,254). Sports injuries accounted for 14% (n=2,083) of attendances, while 8% were due to road traffic collisions (n=1,133).

**Table 1: ED attendances by injury group and month, April 2014 to March 2015\***

Injury group	Apr	May	Jun	Jul	Aug	Sep	Oct	Nov	Dec	Jan	Feb	Mar	Total	%
<b>Other injury</b>	928	855	1048	892	874	1068	920	949	869	862	921	1068	11254	75%
<b>Sports injury</b>	148	126	166	109	96	208	273	259	111	168	207	212	2083	14%
<b>Road traffic collision</b>	85	85	104	100	90	111	103	99	93	91	82	90	1133	8%
<b>Assault</b>	27	22	23	25	36	41	29	22	44	37	36	35	377	3%
<b>Deliberate self-harm</b>	10	7	8	16	14	23	29	16	15	18	13	25	194	1%
<b>Total</b>	1198	1095	1349	1142	1110	1451	1354	1345	1132	1176	1259	1430	15041	100%

\* Due to low numbers, firework injuries have been included in the ‘other’ injury category (n<5).

The referral source to the ED is displayed in table 2. Almost two-thirds (65%) were self-referred to the ED (n=9,739) while 19% were referred by the emergency services (n=2,798).

**Table 2: ED attendances by referral source and month, April 2014 to March 2015<sup>1</sup>**

Referral source	Apr	May	Jun	Jul	Aug	Sep	Oct	Nov	Dec	Jan	Feb	Mar	Total	%
Self-referral	835	772	981	757	716	916	898	867	716	717	745	819	9739	65%
Emergency services	176	158	177	211	229	287	233	252	253	249	259	314	2798	19%
Other	147	133	143	138	143	210	187	164	129	155	194	225	1968	13%
Educational establishment	6	14	25	17	0	10	15	26	6	24	21	25	189	1%
Work	13	6	12	***	13	7	<10	<20	***	8	9	13	114	1%
GP	8	6	<10	***	***	9	5	5	9	<15	13	17	98	1%
Health care provider: same or other	6	***	***	***	***	7	***	10	11	6	11	11	72	0%
Police	7	***	5	10	***	5	5	***	***	***	7	6	63	0%
<b>Total</b>	<b>1198</b>	<b>1095</b>	<b>1349</b>	<b>1142</b>	<b>1110</b>	<b>1451</b>	<b>1354</b>	<b>1345</b>	<b>1132</b>	<b>1176</b>	<b>1259</b>	<b>1430</b>	<b>15041</b>	<b>100%</b>

Table 3 displays the incident location of injuries sustained. Thirty-five per cent occurred in a public place (n=5,253), while almost one third (32%) occurred at home (n=4,776). Eight per cent of injuries occurred at work (n=1,203) and in an educational establishment (n=1,132).

**Table 3: ED attendances by incident location and month, April 2014 to March 2015<sup>1</sup>**

Incident location	Apr	May	Jun	Jul	Aug	Sep	Oct	Nov	Dec	Jan	Feb	Mar	Total	%
Public place	513	499	369	356	304	467	446	434	513	415	462	540	5253	35%
Home	432	436	401	287	258	396	381	325	427	319	365	447	4776	32%
Other	224	205	135	132	159	205	212	189	213	234	188	222	2677	18%
Work	151	115	82	<100	<90	118	95	76	90	109	93	118	1203	8%
Educational establishment	64	71	106	<70	***	124	137	163	67	95	117	121	1132	8%
<b>Total</b>	<b>1198</b>	<b>1095</b>	<b>1349</b>	<b>1142</b>	<b>1110</b>	<b>1451</b>	<b>1354</b>	<b>1345</b>	<b>1132</b>	<b>1176</b>	<b>1259</b>	<b>1430</b>	<b>15041</b>	<b>100%</b>

The discharge destination for ED attendances is displayed in table 4. Just under two-fifths (38%) were discharged from hospital with no follow-up treatment required (n=5,695). Over one in five (22%) were referred to the fracture clinic (n=3,293), 18% were discharged from hospital with follow-up care to be provided by a General Practitioner (GP; n=2,643) and over one in ten (12%) were admitted to hospital (n=1,821).

<sup>1</sup> Please note that all numbers less than five have been suppressed (\*\*\*) in line with patient confidentiality. If there is only one number less than five in a category then two numbers have been suppressed to prevent back calculations from totals.

**Table 4: ED attendances by discharge destination and month, April 2014 to March 2015<sup>1,\*</sup>**

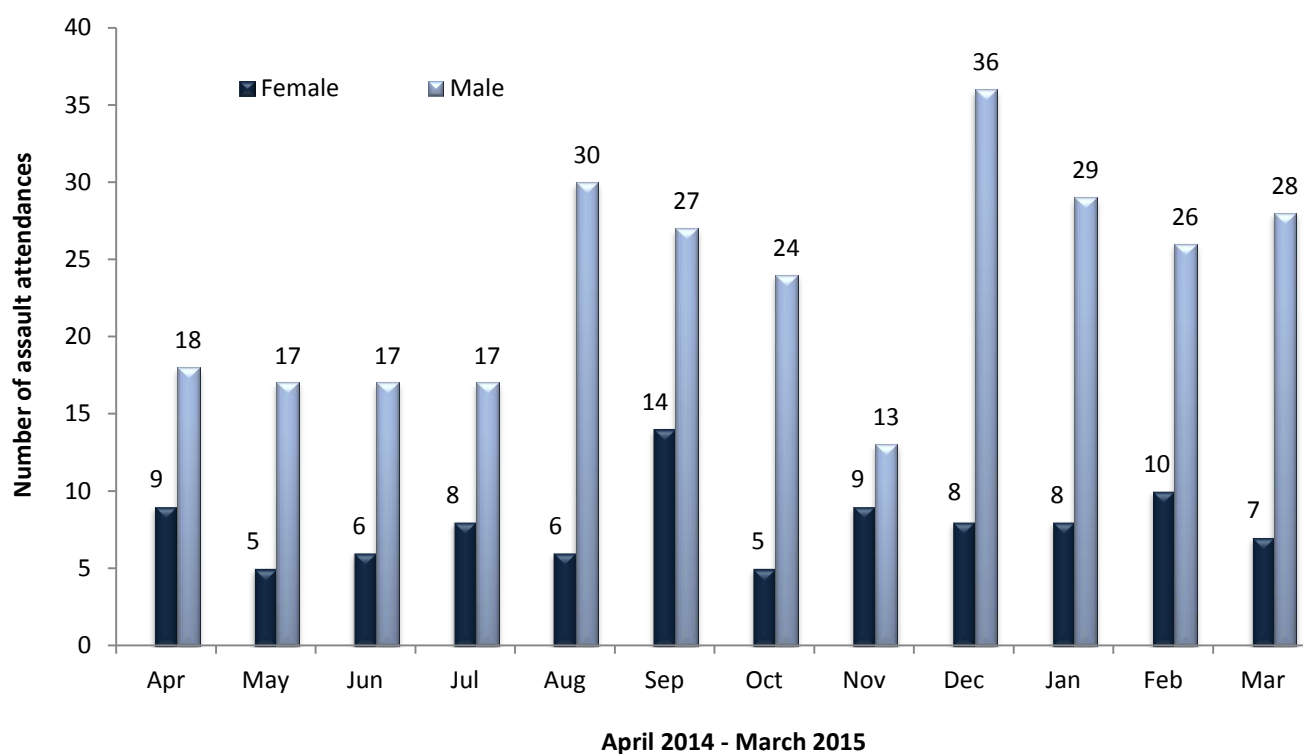
Discharge destination	Apr	May	Jun	Jul	Aug	Sep	Oct	Nov	Dec	Jan	Feb	Mar	Total	%
Discharged - no follow-up	482	407	560	431	449	554	562	459	413	415	436	527	5695	38%
Fracture clinic	285	275	333	269	222	317	294	299	216	246	267	270	3293	22%
Discharged - follow-up care by GP	184	175	189	198	194	239	251	279	192	219	255	268	2643	18%
Admitted	115	114	122	119	109	174	146	170	180	165	186	221	1821	12%
Out-patient clinic	35	44	56	31	50	45	32	56	44	43	43	50	529	4%
Follow-up within ED	43	25	31	36	24	50	23	<50	35	32	28	<40	410	3%
Left before being treated	33	35	32	32	25	31	16	10	21	22	14	17	288	2%
Other health care professional	7	7	15	14	<20	11	<15	14	12	11	12	17	149	1%
Transferred to other health care provider	9	9	<10	<10	15	23	9	12	13	17	12	9	139	1%
Left having refused treatment	***	***	5	5	***	***	***	***	***	***	***	7	36	0%
Other	***	***	***	***	5	***	6	0	***	***	***	5	32	0%
Died in department	0	0	0	0	0	***	0	0	***	***	0	***	6	0%
<b>Total</b>	<b>1198</b>	<b>1095</b>	<b>1349</b>	<b>1142</b>	<b>1110</b>	<b>1451</b>	<b>1354</b>	<b>1345</b>	<b>1132</b>	<b>1176</b>	<b>1259</b>	<b>1430</b>	<b>15041</b>	<b>100%</b>

\*There were less than five records where the disposal was 'referral to ambulatory care'; these have been included under 'other health care professional'.

## ASSAULT ATTENDANCES

Between April 2014 and March 2015 there were 377 assault attendances to Royal Lancaster Infirmary ED. The month with the highest number was December with 44 assault attendances (figure 3).

**Figure 3: ED assault attendances by gender and month, April 2014 to March 2015** Error! Bookmark not defined.



Three-quarters (75%) of attendees presenting at the ED with assault-related injuries were male (n=282; figure 3). Just under half (49%) were aged between 15 and 29 years (n=186) while 42% were aged between 30 and 59 years (n=159; table 5).

**Table 5: ED assault attendances by age group and month, April 2014 to March 2015<sup>1</sup>**

Age group	Apr	May	Jun	Jul	Aug	Sep	Oct	Nov	Dec	Jan	Feb	Mar	Total	%
0-4	0	0	0	0	0	0	0	***	0	0	0	0	***	0%
5-14	***	***	***	***	***	***	***	***	***	***	***	0	24	6%
15-29	8	12	12	10	19	23	11	8	25	<25	17	<20	186	49%
30-59	17	<10	7	12	<20	<20	15	10	<20	11	14	17	159	42%
60 plus	***	0	***	***	0	0	***	***	0	0	***	***	<10	2%
<b>Total</b>	<b>27</b>	<b>22</b>	<b>23</b>	<b>25</b>	<b>36</b>	<b>41</b>	<b>29</b>	<b>22</b>	<b>44</b>	<b>37</b>	<b>36</b>	<b>35</b>	<b>377</b>	<b>100%</b>

The location of assaults sustained is shown in table 6. Just over half (51%) of incidents occurred in a public place (n=194) and 22% occurred in 'other' locations (n=82); two-fifths (20%) of assaults occurred in the home (n=74).

**Table 6: ED assault attendances by incident location and month, April 2014 to March 2015<sup>1</sup>**

Incident location	Apr	May	Jun	Jul	Aug	Sep	Oct	Nov	Dec	Jan	Feb	Mar	Total	%
Public place	7	9	10	15	25	22	15	9	29	19	13	21	194	51%
Other	10	6	7	7	5	8	5	***	5	<15	10	<10	82	22%
Home	5	<10	<10	***	***	9	6	11	8	5	9	6	74	20%
Work	5	0	0	0	***	***	***	0	***	***	***	0	16	4%
Educational establishment	0	***	***	***	0	***	***	***	***	0	***	***	11	3%
<b>Total</b>	<b>27</b>	<b>22</b>	<b>23</b>	<b>25</b>	<b>36</b>	<b>41</b>	<b>29</b>	<b>22</b>	<b>44</b>	<b>37</b>	<b>36</b>	<b>35</b>	<b>377</b>	<b>100%</b>

Table 7 displays the disposal method of assault attendances. Just under two in five (39%) were discharged from hospital with no follow-up treatment required (n=147), while 36% required follow-up treatment (n=137); over one in ten (13%) were admitted to hospital (n=50).

**Table 7: ED assault attendances by disposal method and month, April 2014 to March 2015<sup>1</sup>**

Disposal	Apr	May	Jun	Jul	Aug	Sep	Oct	Nov	Dec	Jan	Feb	Mar	Total	%
Discharged	9	10	9	<10	<20	20	10	6	17	18	11	12	147	39%
Follow-up	12	7	9	9	13	8	12	10	15	11	<20	<20	137	36%
Admitted	***	***	***	***	***	6	<10	***	5	***	8	5	50	13%
Other	<10	***	***	5	5	7	***	***	7	<10	***	***	43	11%
<b>Total</b>	<b>27</b>	<b>22</b>	<b>23</b>	<b>25</b>	<b>36</b>	<b>41</b>	<b>29</b>	<b>22</b>	<b>44</b>	<b>37</b>	<b>36</b>	<b>35</b>	<b>377</b>	<b>100%</b>